

## APPLICATION INSTRUCTIONS – Supermark Labels



1. Peel backing paper away from the label.



2. Stick label to flat clean surface of item to be marked, in correct position.



3. Using the NON greasy side of the backing paper, rub down very firmly across entire label and especially the punched letters to ensure all air bubbles are expelled and label is stuck firmly to the surface.



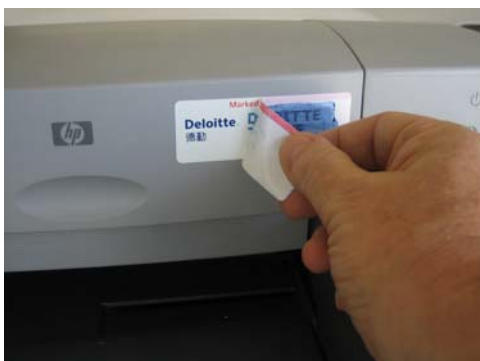
4. Squeeze some Marking Compound from the tube into a glass or ceramic dish. (This is usually easier than working from the tube).



5. Using the spreader provided, spread a little Marking Compound across the punched letters, ensuring all holes are filled with Compound. Remove any excess Compound with the tip of the spreader.



6. Using a clean, folded paper kitchen towel, gently dab mark (DO NOT RUB across it) to lift off any excess Marking Compound).



7. After approx 30 seconds, carefully lift up the top left edge of the protective overlay on front of label (where it is red colored) and slowly peel away the overlay. Make sure not to lift the label or damage the label itself.



8. Label and mark will dry overnight and label will adhere fully within approx 48 hours. In the meantime -DO NOT TOUCH MARK!